

Cass County

1. Site Information:

- Beardstown
- Latitude - N 40° 00.884'
- Longitude - W 90° 19.912'
- Tower Height and Type -

2. Instrument Information:

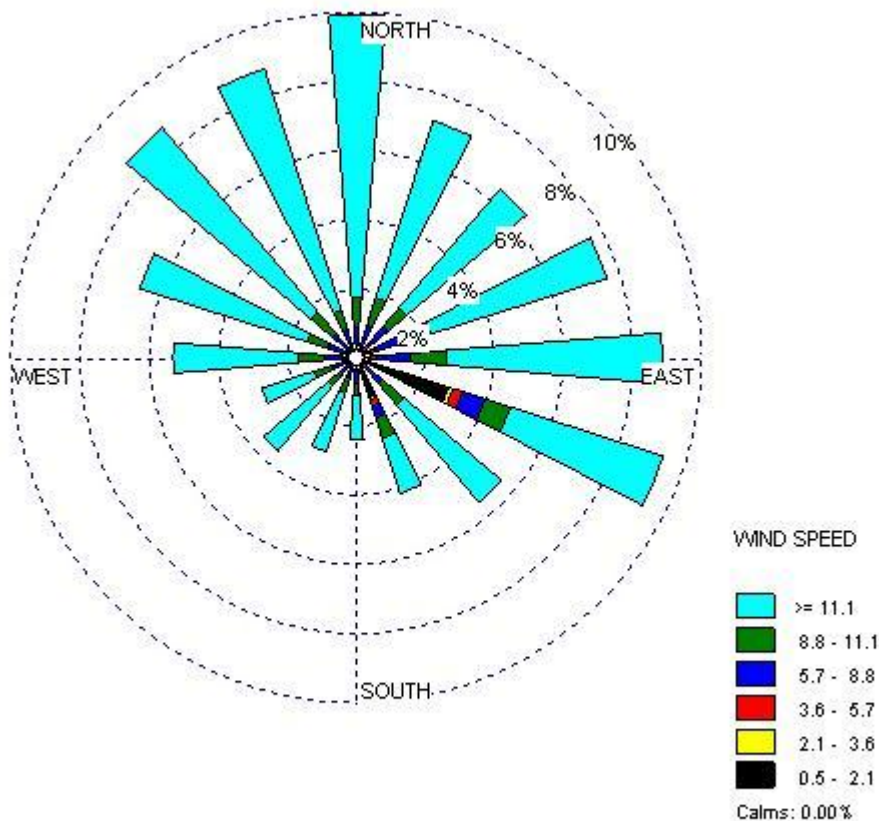
- Wind Speed: at 30m, 50m and 65m
- Wind Direction: at 30m and 65m
- Temperature: at 2m

3. Measurement

- Period: October 3, 2006 – June 6, 2007
- Measuring Interval: 10 minutes
- Total No. of Hours/Total No. of Hours Used: 5906 hr/5906 hr

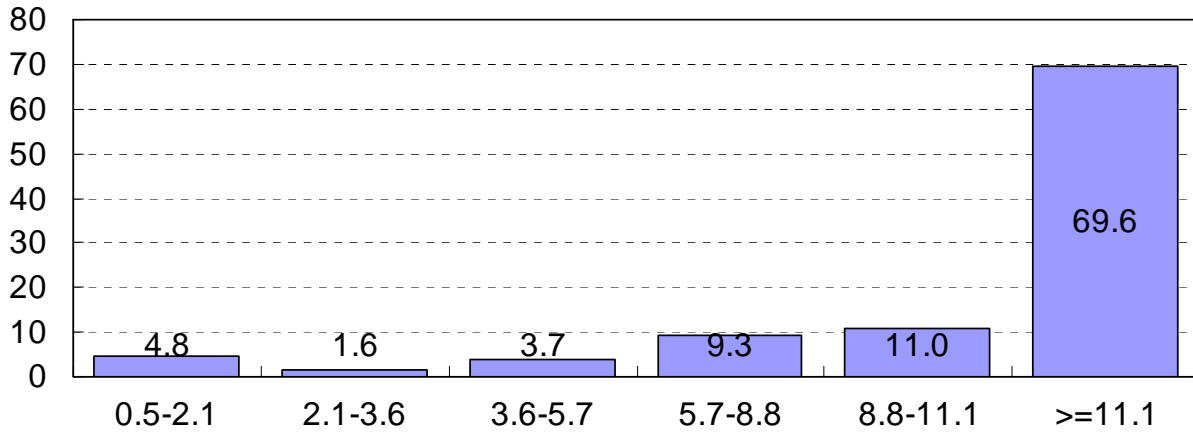
4. Results

- Wind Rose: Wind Speed at 65m (mph) and Wind Direction at 30m



- Average Wind Speed at 65m: 14.7 mph / 12.7 knots / 6.6 m/s

c. Wind Speed Distribution (mph) at 65m



d. Monthly Average Wind Speed (mph) at different measuring heights

Month	30m		50m		65m	
	Average	STDEV	Average	STDEV	Average	STDEV
October, 2005	9.4	2.5	12.4	2.1	14.4	1.9
November, 2005	10.4	2.4	13.4	2.0	14.7	1.8
December, 2005	11.1	2.3	14.1	1.9	15.0	1.7
January, 2006	9.4	2.1	11.6	1.7	12.4	1.6
February, 2006	10.9	2.5	13.4	2.0	14.3	1.8
March, 2006	11.9	2.8	14.7	2.3	15.7	2.2
April, 2006	12.0	2.8	15.1	2.4	16.3	2.2
May, 2006	9.4	2.5	12.4	2.1	13.4	2.0
June, 2006	9.2	2.4	12.7	2.1	13.9	1.9

