

Coles County 1

1. Site Information:

- a. Section 24, Ashmore Township
- b. Latitude - N 39° 30.718'
- c. Longitude - W 87° 57.951'
- d. Tower Height and Type - 50 meter Met Tower

2. Instrument Information:

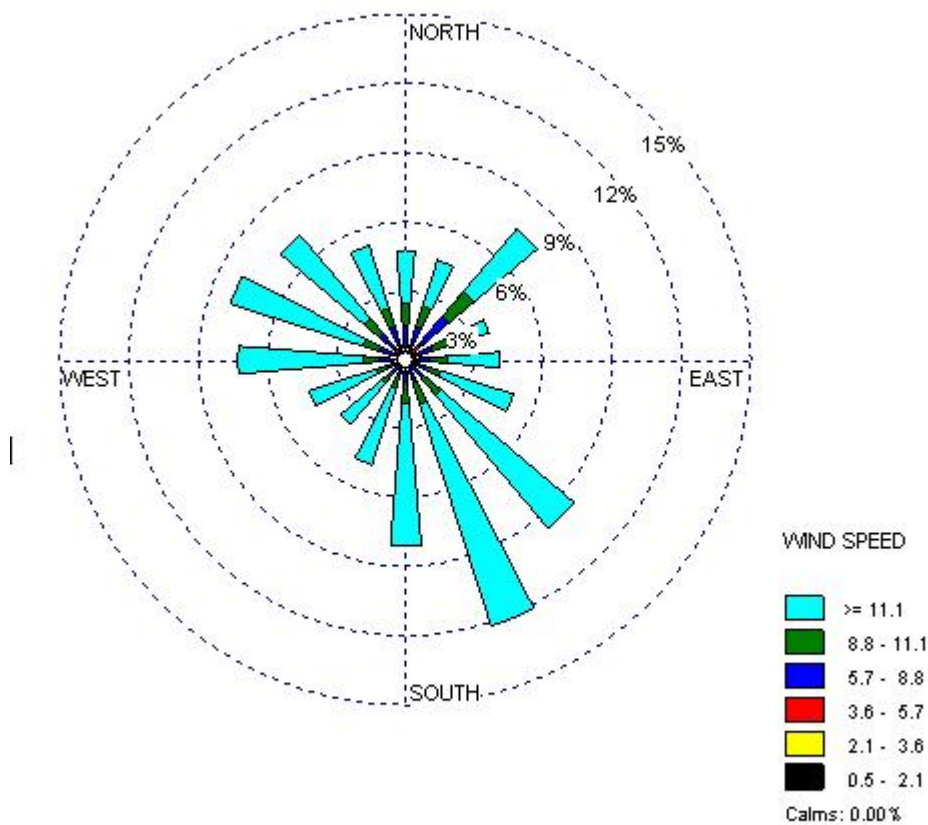
- a. Wind Speed: at 30m, 40m and 50m
- b. Wind Direction: at 30m and 50m
- c. Temperature: at 2m

3. Measurement

- a. Period: April 17, 2005 – May 31, 2006
- b. Measuring Interval: 10 minutes
- c. Total No. of Hours/Total No. of Hours Used: 9822 hr/9822 hr

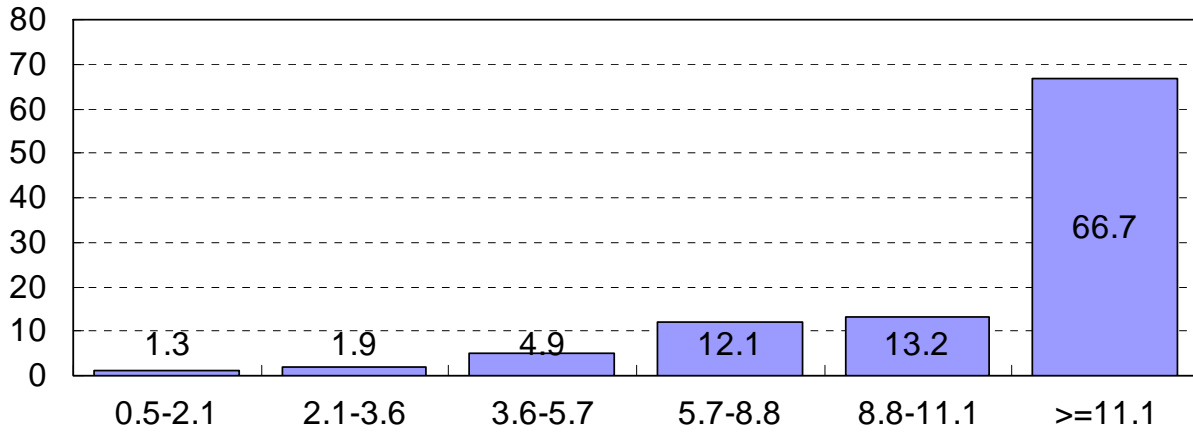
4. Results

- a. Wind Rose: Wind Speed at 50m (mph) and Wind Direction at 50m



- b. Average Wind Speed at 50m: 14.2 mph / 12.3 knots / 6.3 m/s

c. Wind Speed Distribution (mph) at 50m



d. Monthly Average Wind Speed (mph) at different measuring heights

Month	30m		40m		50m	
	Average	STDEV	Average	STDEV	Average	STDEV
April, 2005	15.3	1.8	15.9	1.8	16.7	1.7
May, 2005	12.8	1.6	13.5	1.6	14.3	1.6
June, 2005	10.5	1.4	11.3	1.4	12.0	1.3
July, 2005	9.0	1.3	9.8	1.3	10.6	1.3
August, 2005	7.9	1.2	8.8	1.2	9.5	1.1
September, 2005	10.0	1.4	11.0	1.3	11.8	1.3
October, 2005	10.8	1.3	11.8	1.3	12.5	1.3
November, 2005	16.6	1.8	17.4	1.7	18.2	1.7
December, 2005	12.8	1.3	13.3	1.3	13.9	1.3
January, 2006	16.9	1.8	17.6	1.8	18.2	1.8
February, 2006	14.2	1.5	14.8	1.5	15.5	1.5
March, 2006	15.0	1.6	15.7	1.6	16.3	1.6
April, 2006	14.7	1.7	15.4	1.7	16.2	1.7
May, 2006	12.4	1.5	13.0	1.5	13.6	1.5

