

Coles County - Lakeland

1. Site Information:

- a. Lake Land Community College
- b. Latitude - N 39° 27.096'
- c. Longitude - W 88° 23.405'
- d. Tower Height and Type - 50 meter Met Tower

2. Instrument Information:

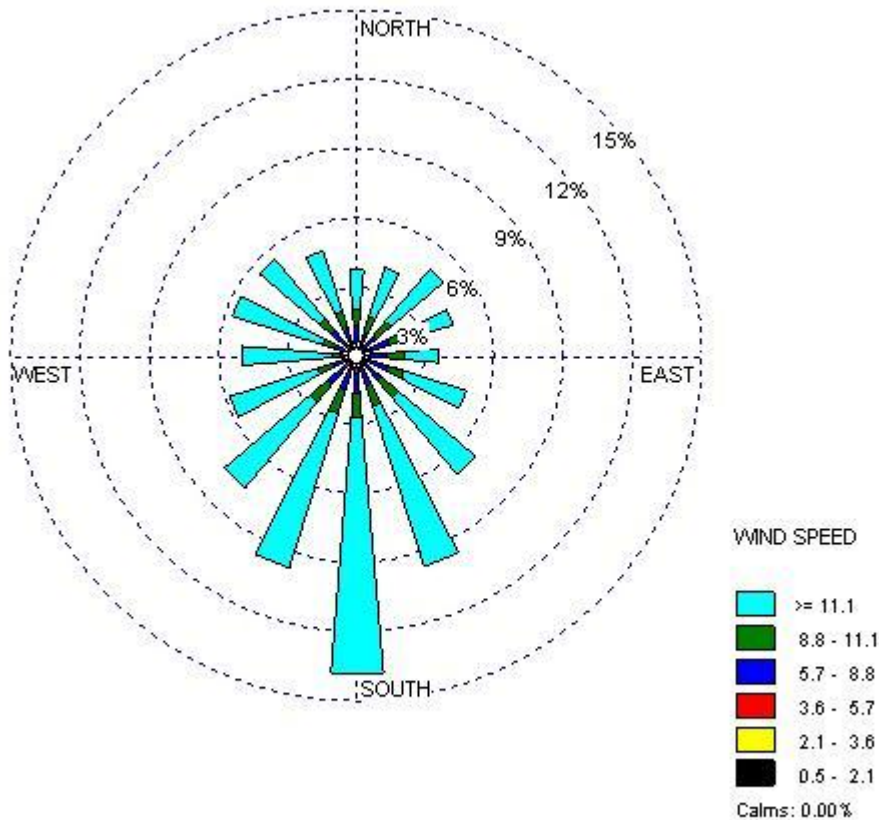
- a. Wind Speed: at 30m, 40m and 50m
- b. Wind Direction: at 40m and 50m
- c. Temperature: at 2m

3. Measurement

- a. Period: June 20, 2006 – August 6, 2007
- b. Measuring Interval: 1 hour
- c. Total No. of Hours/Total No. of Hours Used: 8572 hr/8572 hr

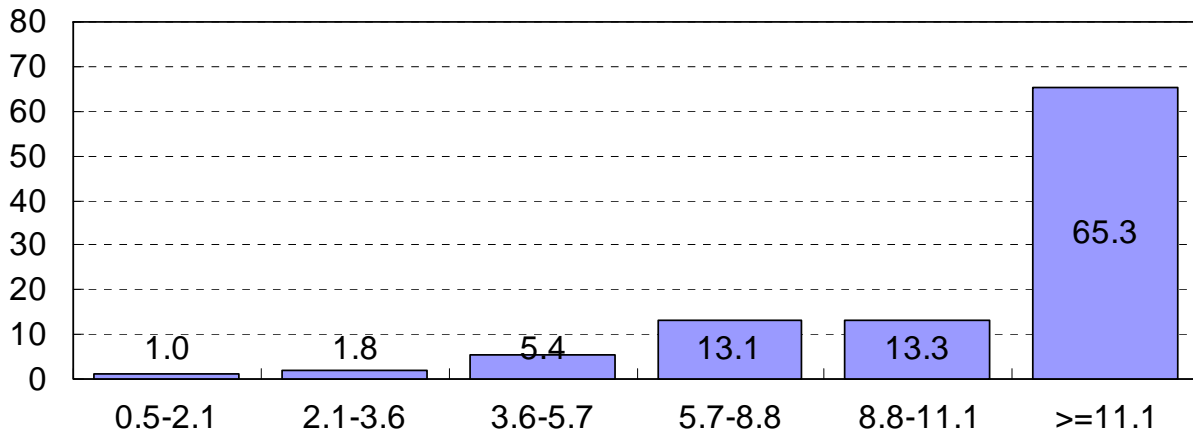
4. Results

- a. Wind Rose: Wind Speed at 50m (mph) and Wind Direction at 50m



- b. Average Wind Speed at 50m: 13.9 mph / 12.0 knots / 6.2 m/s

c. Wind Speed Distribution (mph) at 50m



d. Monthly Average Wind Speed (mph) at different measuring heights

Month	30m		40m		50m	
	Average	STDEV	Average	STDEV	Average	STDEV
June, 2006	8.4	2.1	9.2	2.1	9.7	2.1
July, 2006	9.5	1.9	10.5	1.9	11.1	1.9
August, 2006	8.0	2.0	9.0	1.9	10.0	1.8
September, 2006	10.4	2.0	11.4	2.0	12.2	2.0
October, 2006	13.6	2.2	14.6	2.1	15.4	2.1
November, 2006	13.7	1.8	14.7	1.8	15.6	1.8
December, 2006	14.8	1.9	15.7	1.9	16.5	1.8
January, 2007	14.2	2.0	15.0	2.0	15.8	2.4
February, 2007	14.6	2.3	15.4	2.2	16.1	2.2
March, 2007	14.3	2.3	15.4	2.2	16.1	2.2
April, 2007	15.1	2.3	15.9	2.3	16.5	2.3
May, 2007	11.5	2.1	12.2	2.1	13.1	2.1
June, 2007	10.4	2.2	11.1	2.2	11.8	2.1
July, 2007	8.3	2.0	9.3	1.9	9.9	1.9
August, 2007	6.8	1.8	7.7	1.8	8.3	1.8

