

Franklin County

1. Site Information:

- a. Franklin Junction
- b. Latitude - N 37° 55.714'
- c. Longitude - W 88° 49.086'
- d. Tower Height and Type - Communication Tower

2. Instrument Information:

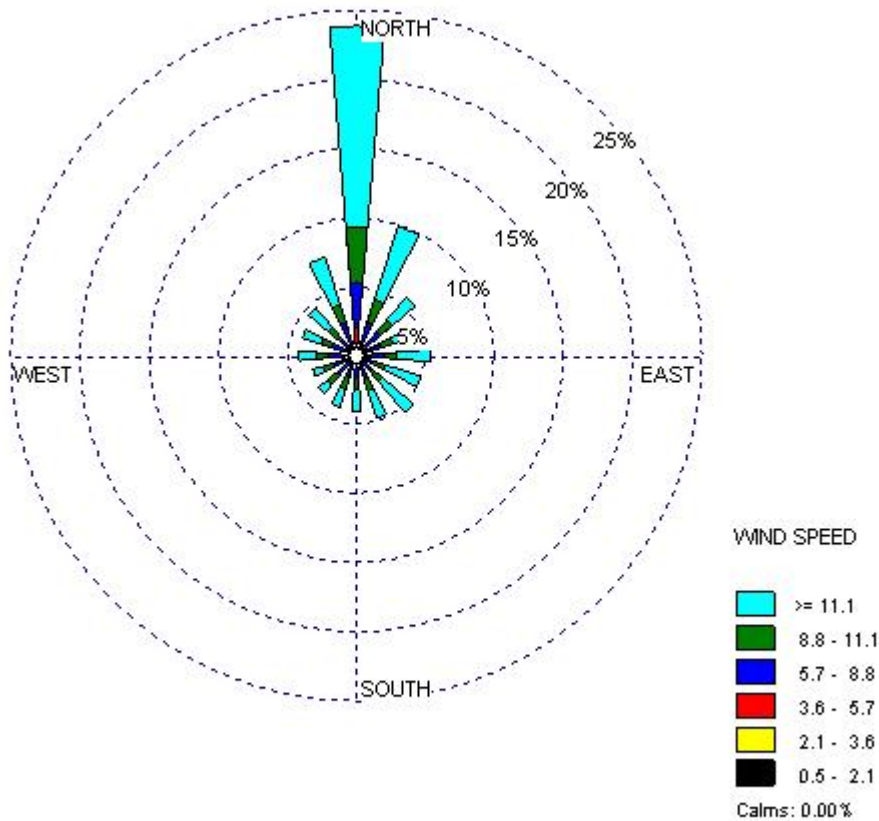
- a. Wind Speed: at 30m, 50m and 70m
- b. Wind Direction: at 30m and 70m
- c. Temperature: at 2m

3. Measurement

- a. Period: December 12, 2005 – June 29, 2007
- b. Measuring Interval: 10 minutes
- c. Total No. of Hours/Total No. of Hours Used: 13530 hr/13530 hr

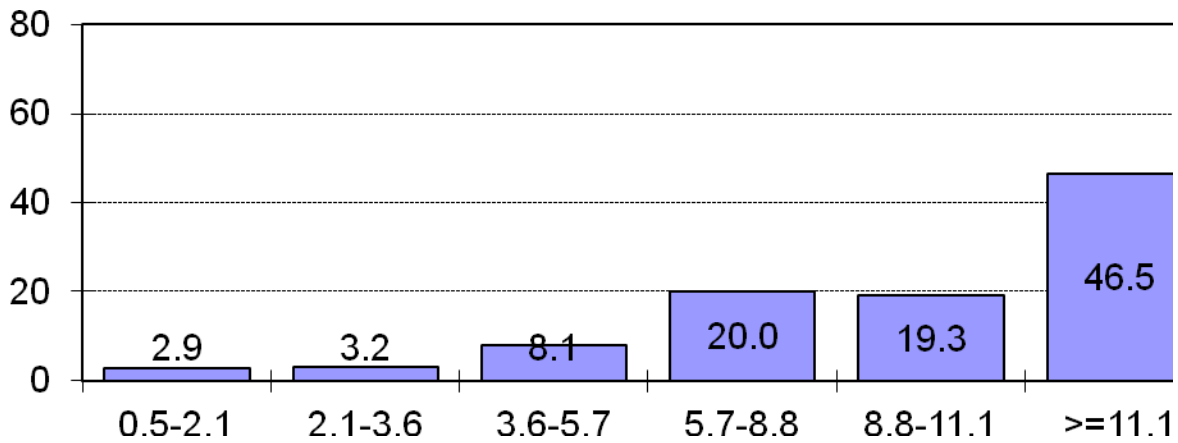
4. Results

- a. Wind Rose: Wind Speed at 70m (mph) and Wind Direction at 70m



- b. Average Wind Speed at 70m: 11.1 mph / 9.6 knots / 5.0 m/s

c. Wind Speed Distribution (mph) at 70m



d. Monthly Average Wind Speed (mph) at different measuring heights

Month	30m		50m		70m	
	Average	STDEV	Average	STDEV	Average	STDEV
December, 2005	8.1	1.8	10.0	1.7	11.4	1.7
January, 2006	10.4	2.3	12.6	2.3	14.4	2.3
February, 2006	8.4	1.8	10.1	1.7	11.7	1.7
March, 2006	9.3	2.1	11.2	2.1	12.7	2.0
April, 2006	8.0	2.0	10.0	2.0	11.8	1.9
May, 2006	6.3	1.7	8.5	1.6	10.1	1.5
June, 2006	5.3	1.4	7.1	1.4	8.7	1.4
July, 2006	5.3	1.4	7.2	1.5	9.0	1.4
August, 2006	4.4	1.2	6.2	1.2	7.8	1.2
September, 2006	4.9	1.3	7.0	1.3	8.6	1.3
October, 2006	6.9	1.7	9.2	1.7	11.0	1.7
November, 2006	7.1	1.6	9.1	1.6	10.8	1.6
December, 2006	8.4	1.9	10.4	1.9	12.3	1.8
January, 2007	8.4	2.0	10.2	1.9	11.5	1.8
February, 2007	9.0	1.9	10.6	1.9	11.8	1.8
March, 2007	8.6	2.0	10.8	2.0	12.9	1.8
April, 2007	8.9	2.1	11.1	2.0	12.7	2.0
May, 2007	5.7	1.5	7.7	1.6	9.5	1.5
June, 2007	4.8	1.4	6.8	1.4	8.5	1.4

