

Greene County

1. Site Information:

- a. Greene County, IL
- b. 39.4013 - N
- c. 90.4272 - W
- d. Tower Height and Type - 50 meter Met Tower

2. Instrument Information:

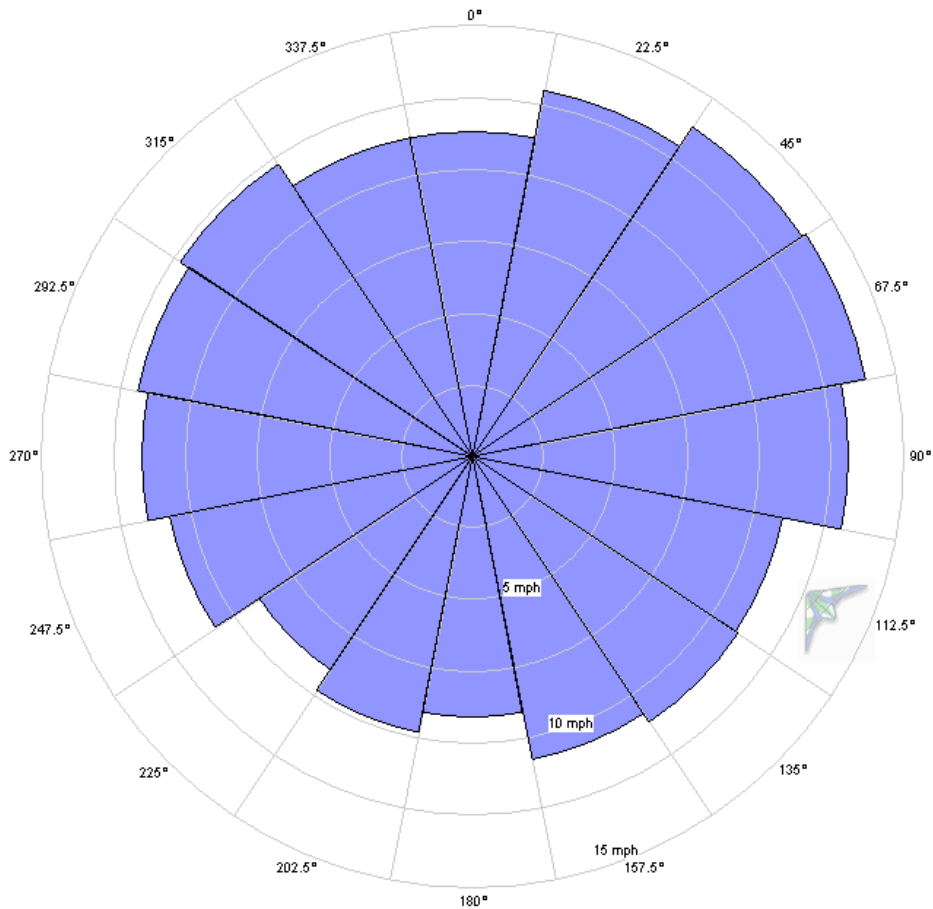
- a. Wind Speed: at 50m and 40m
- b. Wind Direction: at 49m and 39m
- c. Temperature: at 2m

3. Measurement

- a. Period: December 8, 2005 – December 7, 2006
- b. Measuring Interval: 10 minutes
- c. Total No. of Hours/Total No. of Hours Used: 8734.3 hr/8709 hr

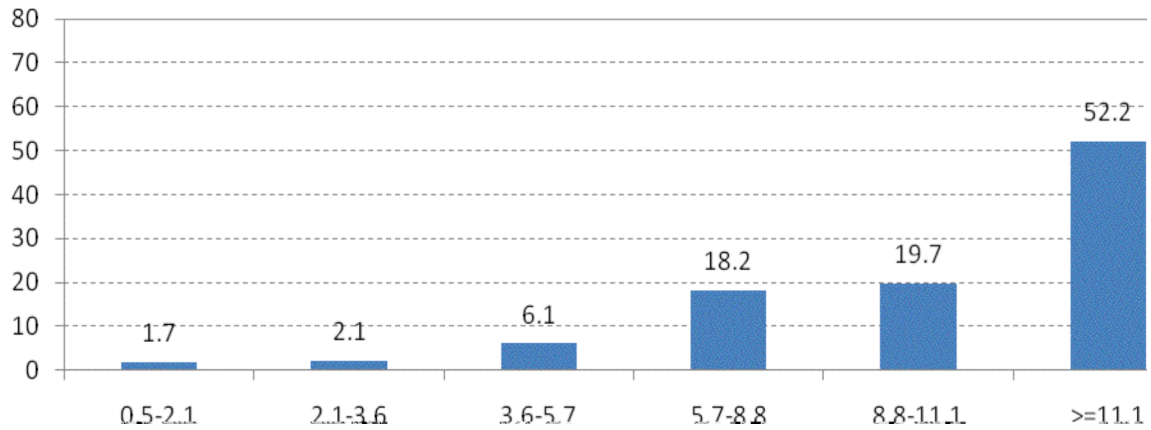
4. Results

- a. Wind Rose: Wind Speed at 50m (mph) and Wind Direction at 49m



- b. Average Wind Speed at 50m: 11.8 mph / 10.3 knots / 5.3 m/s

c. Wind Speed Distribution (mph) at 50m



d. Monthly Average Wind Speed (mph) at different measuring heights

| Month | 50 m | | 40m | |
|-----------------|---------|-------|---------|-------|
| | Average | STDEV | Average | STDEV |
| December, 2005 | 12.0 | 1.3 | 11.5 | 1.3 |
| January, 2006 | 14.4 | 1.7 | 13.8 | 1.7 |
| February, 2006 | 12.1 | 1.3 | 11.7 | 1.4 |
| March, 2006 | 14.2 | 1.7 | 13.7 | 1.8 |
| April, 2006 | 13.9 | 1.8 | 13.3 | 1.8 |
| May, 2006 | 12.1 | 1.5 | 11.5 | 1.6 |
| June, 2006 | 10.1 | 1.4 | 9.4 | 1.4 |
| July, 2006 | 9.0 | 1.3 | 8.4 | 1.3 |
| August, 2006 | 9.2 | 1.3 | 8.5 | 1.3 |
| September, 2006 | 10.6 | 1.4 | 9.9 | 1.4 |
| October, 2006 | 12.7 | 1.5 | 12.0 | 1.6 |
| November, 2006 | 12.1 | 1.3 | 11.3 | 1.4 |
| December, 2006 | 9.8 | 0.9 | 9.3 | 0.9 |

