

Jo Daviess County

1. Site Information:

- East Dubuque
- Latitude - N 42° 29.640'
- Longitude - W 90° 37.655'
- Tower Height and Type - 50 meter Met Tower

2. Instrument Information:

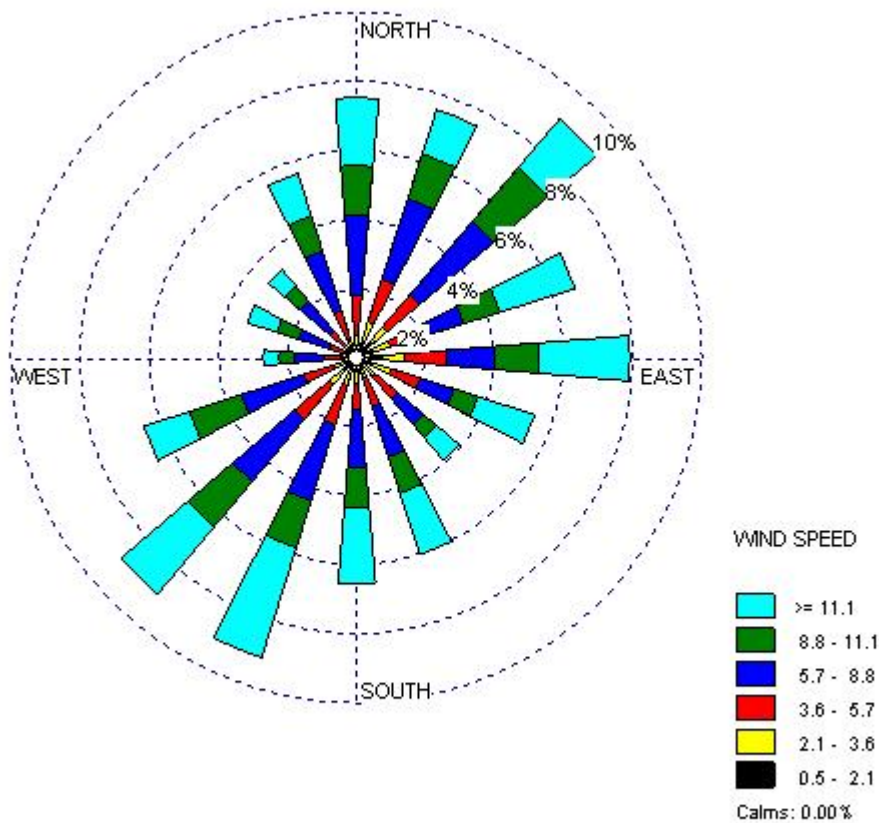
- Wind Speed: at 10m, and 30m
- Wind Direction: at 30m
- Temperature: at 2m

3. Measurement

- Period: August 2, 2006 – August 7, 2007
- Measuring Interval: 10 minutes
- Total No. of Hours/Total No. of Hours Used: 8875 hr/8875 hr

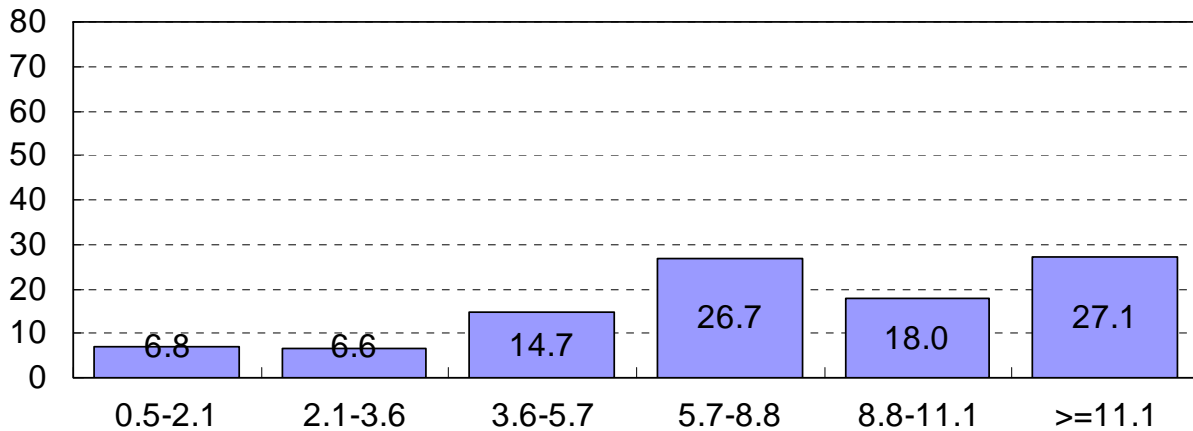
4. Results

- Wind Rose: Wind Speed at 30m (mph) and Wind Direction at 30m



- Average Wind Speed at 30m: 8.6 mph / 7.5 knots / 3.8 m/s

c. Wind Speed Distribution (mph) at 30m



d. Monthly Average Wind Speed (mph) at different measuring heights

Month	10m		30m	
	Average	STDEV	Average	STDEV
August, 2006	5.3	1.5	6.2	1.6
September, 2006	6.3	1.8	7.4	1.8
October, 2006	7.8	2.1	9.0	2.2
November, 2006	7.3	1.8	8.4	1.9
December, 2006	8.3	2.1	9.4	2.1
January, 2007	8.7	2.1	9.6	2.2
February, 2007	8.6	2.1	9.7	2.1
March, 2007	8.6	2.0	9.6	2.1
April, 2007	9.2	2.4	10.5	2.5
May, 2007	8.2	2.1	9.4	2.2
June, 2007	6.4	1.8	7.3	1.9
July, 2007	5.4	1.6	6.4	1.7
August, 2007	4.1	1.3	5.0	1.3

