

Knox County

1. Site Information:

- Section 28, Cedar Township (Abingdon)
- Latitude - N 40° 48.962'
- Longitude - W 90° 23.726'
- Tower Height and Type - 50 meter Met Tower

2. Instrument Information:

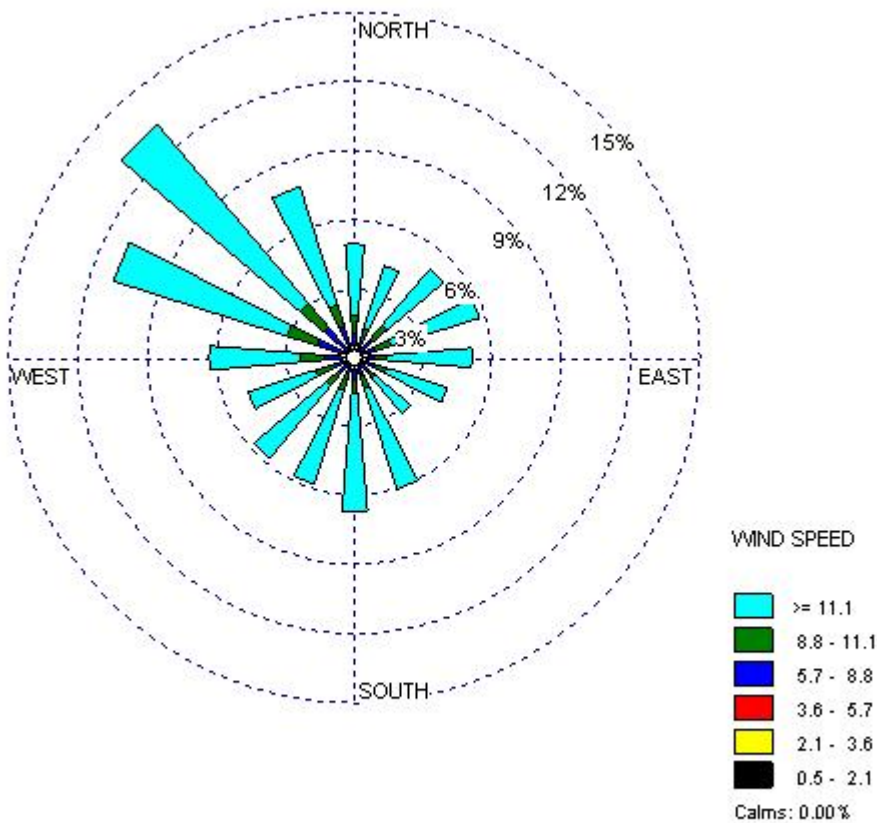
- Wind Speed: at 30m, 40m and 50m
- Wind Direction: at 30m and 50m
- Temperature: at 2m

3. Measurement

- Period: April 2, 2005 – May 24, 2006
- Measuring Interval: 10 minutes
- Total No. of Hours/Total No. of Hours Used: 6408 hr/6408 hr

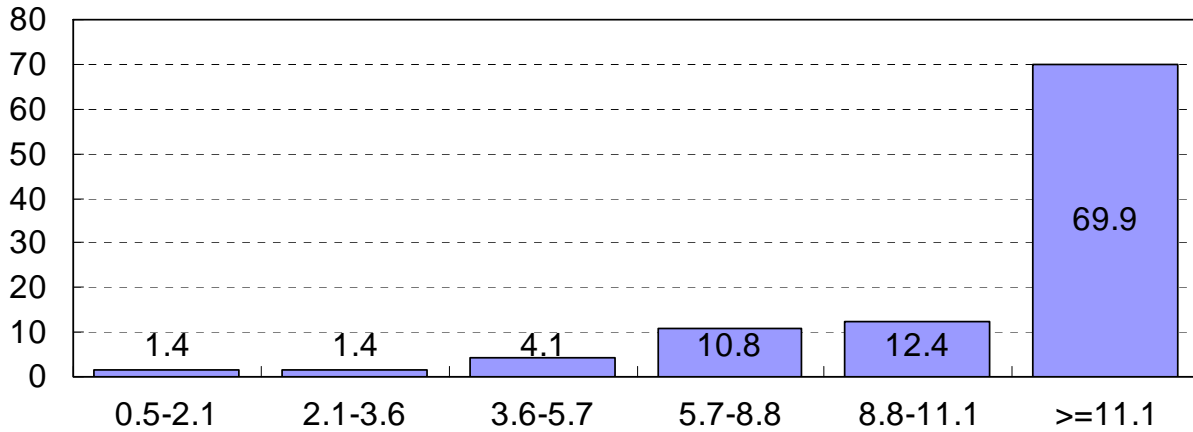
4. Results

- Wind Rose: Wind Speed at 50m (mph) and Wind Direction at 30m



- Average Wind Speed at 50m: 14.1 mph / 12.3 knots / 6.3 m/s

c. Wind Speed Distribution (mph) at 50m



d. Monthly Average Wind Speed (mph) at different measuring heights

Month	30m		40m		50m	
	Average	STDEV	Average	STDEV	Average	STDEV
April, 2005	13.2	1.9	13.9	1.9	14.8	1.8
May, 2005	12.1	1.9	13.0	1.9	13.7	1.9
June, 2005	10.4	1.8	11.0	1.9	11.9	1.8
July, 2005	7.6	1.3	8.1	1.3	8.7	1.3
August, 2005	7.7	1.5	8.1	1.5	8.9	1.5
October, 2005	10.5	1.6	11.3	1.6	12.2	1.6
November, 2005	14.5	2.2	15.4	2.1	16.5	2.1
February, 2006	13.5	1.8	14.2	1.8	14.9	1.8
March, 2006	13.6	1.9	14.3	1.9	14.9	1.8
April, 2006	14.0	2.0	14.9	2.0	15.6	1.9
May, 2006	12.3	1.9	12.9	1.9	13.7	1.9

