

## LaSalle County

### 1. Site Information:

- a. Seneca
- b. Latitude - N 41° 19.367'
- c. Longitude - W 88° 37.895'
- d. Tower Height and Type - 50 meter Met Tower

### 2. Instrument Information:

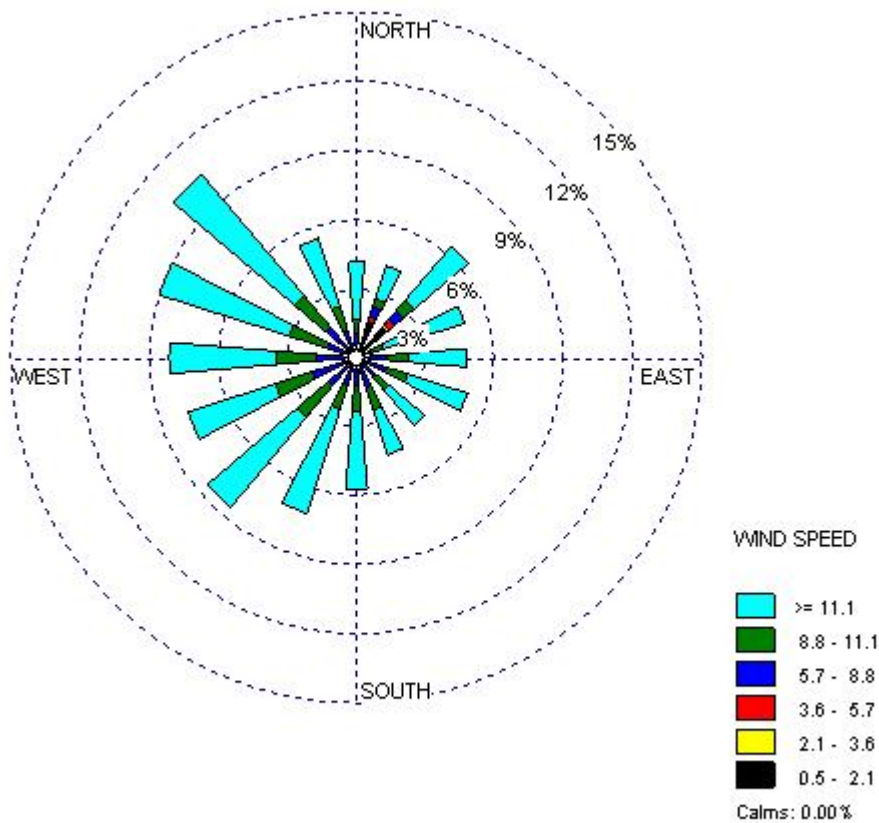
- a. Wind Speed: at 30m, 40m and 50m
- b. Wind Direction: at 30m and 50m
- c. Temperature: at 2m

### 3. Measurement

- a. Period: September 16, 2006 – July 30, 2007
- b. Measuring Interval: 10 minutes
- c. Total No. of Hours/Total No. of Hours Used: 7168 hr/7165 hr

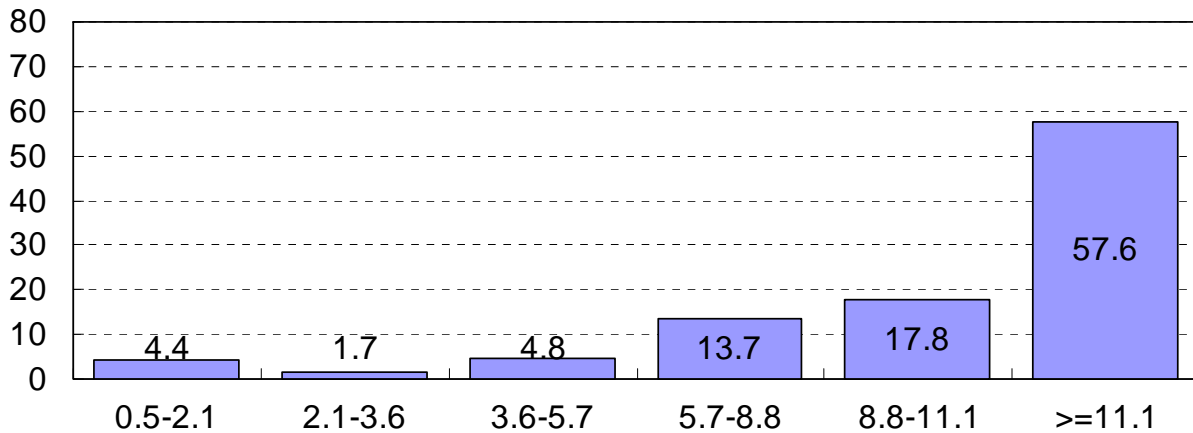
### 4. Results

- a. Wind Rose: Wind Speed at 50m (mph) and Wind Direction at 50m



- b. Average Wind Speed at 50m: 12.2 mph / 10.6 knots / 5.4 m/s

c. Wind Speed Distribution (mph) at 50m



d. Monthly Average Wind Speed (mph) at different measuring heights

Month	30m		40m		50m	
	Average	STDEV	Average	STDEV	Average	STDEV
September, 2006	9.8	1.9	11.0	1.9	11.9	1.9
October, 2006	10.4	2.1	11.6	2.1	12.6	2.2
November, 2006	10.0	1.9	11.1	1.9	12.1	1.9
December, 2006	8.8	1.8	9.8	1.8	10.5	1.8
January, 2007	10.4	2.3	11.1	2.1	11.5	2.1
February, 2007	12.0	2.4	13.0	2.3	14.0	2.3
March, 2007	11.2	2.2	12.3	2.2	13.4	2.2
April, 2007	12.1	2.4	13.1	2.4	14.1	2.4
May, 2007	10.6	2.1	11.6	2.1	12.5	2.1
June, 2007	8.8	1.7	9.8	1.7	10.6	1.7
July, 2007	8.0	1.6	8.9	1.6	9.7	1.5

