

Macoupin County

1. Site Information:

- a. Modesto area
- b. Latitude - N 39° 28.428'
- c. Longitude - W 90° 02.586'
- d. Tower Height and Type - 50 meter Met Tower

2. Instrument Information:

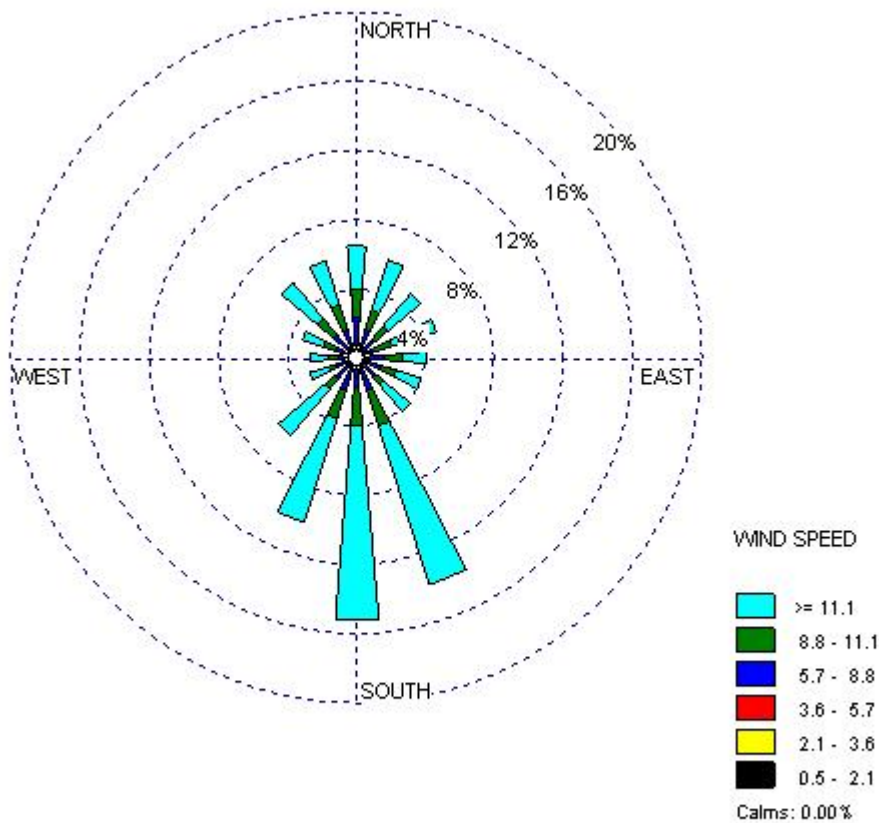
- a. Wind Speed: at 30m, 40m and 50m
- b. Wind Direction: at 30m and 50m
- c. Temperature: at 2m

3. Measurement

- a. Period: June 7, 2006 – June 4, 2007
- b. Measuring Interval: 10 minutes
- c. Total No. of Hours/Total No. of Hours Used: 8549 hr/2515 hr

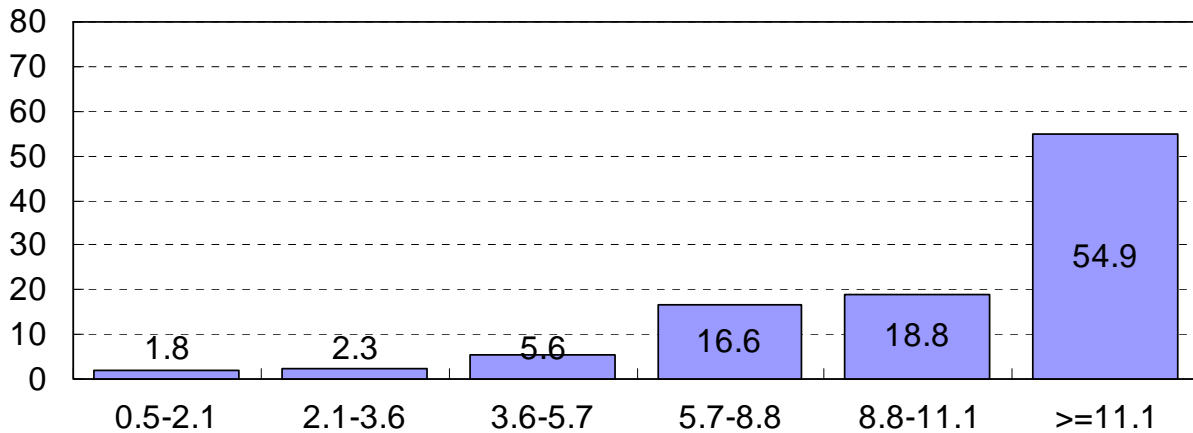
4. Results

- a. Wind Rose: Wind Speed at 50m (mph) and Wind Direction at 50m



- b. Average Wind Speed at 50m: 11.69 mph / 10.16 knots / 5.23 m/s

c. Wind Speed Distribution (mph) at 50m



d. Monthly Average Wind Speed (mph) at different measuring heights

Month	30m		40m		50m	
	Average	STDEV	Average	STDEV	Average	STDEV
June, 2006	10.1	1.5	10.8	1.5	11.5	1.5
July, 2006	9.4	1.4	10.1	1.4	10.9	1.4
August, 2006	9.1	1.4	9.9	1.4	10.6	1.4
September, 2006	10.6	1.5	11.1	1.5	11.8	1.5
October, 2006						
November, 2006	13.2	1.7	14.1	1.7	15.1	1.6
December, 2006						
January, 2007						
February, 2007						
March, 2007						
April, 2007	6.3	0.7	6.6	0.7		
May, 2007	5.1	0.6	5.5	0.6		
June, 2007	5.0	0.6	5.4	0.6		

