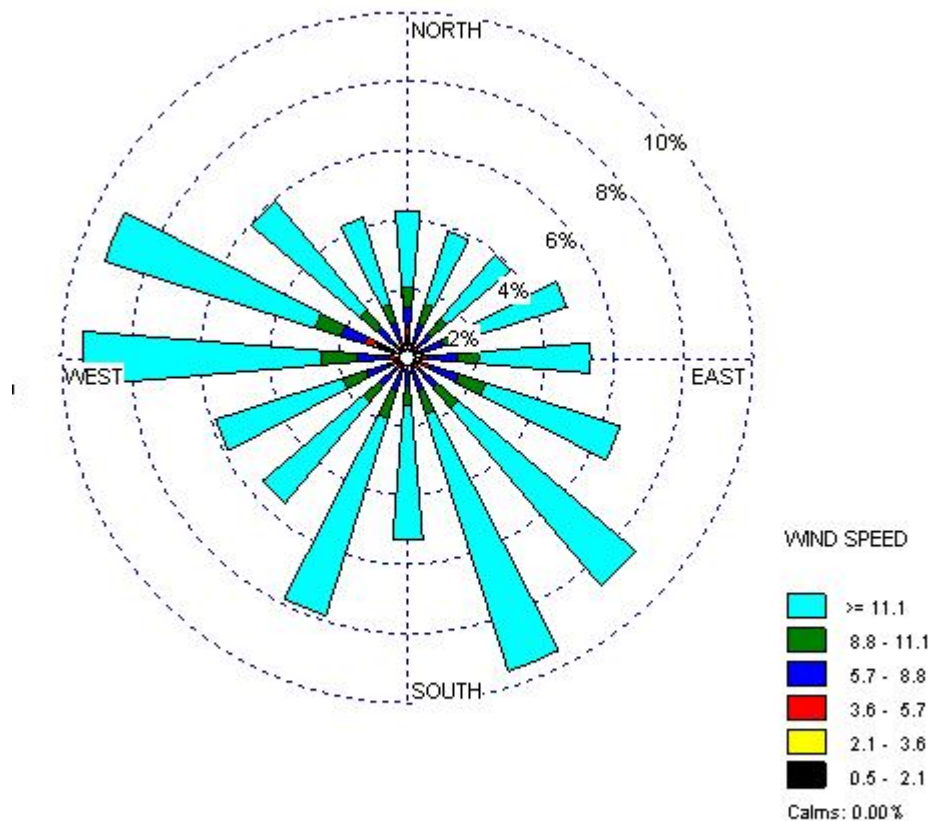


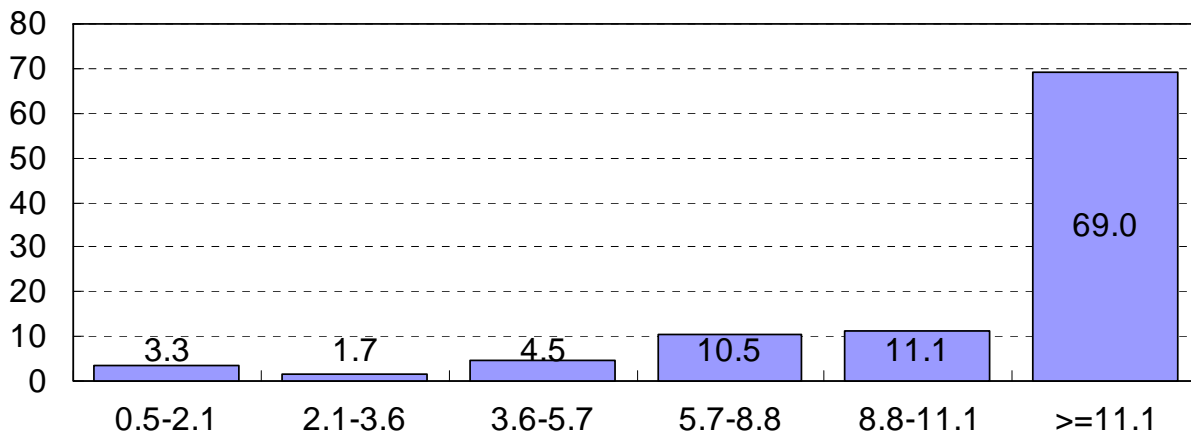
## McDonough County

1. Site Information:
  - a. Section 12, Chalmers Township (Macomb)
  - b. Latitude - N 40° 25.696'
  - c. Longitude - W 90° 40.975'
  - d. Tower Height and Type – 90 meter Communication Tower
2. Instrument Information:
  - a. Wind Speed: at 30m, 60m and 90m
  - b. Wind Direction: at 30m and 90m
  - c. Temperature: at 2m
3. Measurement
  - a. Period: May 27, 2005 – August 16, 2007
  - b. Measuring Interval: 10 minutes
  - c. Total No. of Hours/Total No. of Hours Used: 19793 hr/19400 hr
4. Results
  - a. Wind Rose: Wind Speed at 90m (mph) and Wind Direction at 90m



b. Average Wind Speed at 90m: 14.2 mph / 12.3 knots / 6.3 m/s

c. Wind Speed Distribution (mph) at 90m



d. Monthly Average Wind Speed (mph) at different measuring heights

Month	30m		60m		90m	
	Average	STDEV	Average	STDEV	Average	STDEV
May, 2005	8.2	2.1	11.3	1.8	12.5	1.7
June, 2005	7.7	2.0	10.7	1.8	12.4	1.7
July, 2005	7.5	1.8	10.4	1.6	11.9	1.5
August, 2005	6.8	1.8	9.7	1.5	11.1	1.4
September, 2005	7.8	1.8	11.2	1.6	12.8	1.6
October, 2005	8.6	1.9	12.1	1.6	13.6	1.6
November, 2005	11.8	2.5	15.6	2.1	17.1	2.1
December, 2005	9.5	2.0	12.2	1.6	13.3	1.6
January, 2006	11.7	2.2	15.2	2.2	16.8	2.2
February, 2006	10.9	2.1	13.6	2.0	14.8	3.0
March, 2006	11.8	2.3	14.3	2.1	15.8	2.0
April, 2006	11.8	2.5	14.7	2.3	16.3	2.1
May, 2006	10.1	2.2	12.9	1.9	14.3	1.9
June, 2006	8.2	2.0	11.2	1.7	12.7	1.6
July, 2006	6.9	1.8	10.1	1.5	11.8	1.5
August, 2006	7.4	1.8	10.4	1.6	11.9	1.5
September, 2006	8.6	2.0	11.8	1.7	13.0	1.7
October, 2006	10.0	2.2	13.2	1.9	14.6	2.0
November, 2006	10.5	1.9	13.5	1.7	15.2	1.6
December, 2006	10.3	2.1	13.7	1.9	15.6	1.7
January, 2007	11.4	2.3	14.9	2.0	16.9	3.5
February, 2007	11.4	2.3	13.7	2.0	15.1	3.1
March, 2007	11.3	2.5	14.7	2.2	16.3	2.1
April, 2007	12.1	2.5	15.0	2.2	16.3	2.2
May, 2007	9.5	2.2	12.8	2.0	14.4	1.9
June, 2007	8.2	2.0	10.9	1.8	11.8	1.7
July, 2007	6.9	1.8	10.0	1.5	11.3	1.5
August, 2007	7.0	1.8	10.3	1.6	11.8	1.5

