

Mercer County

1. Site Information:

- Aledo
- Latitude - N 41° 12.292'
- Longitude - W 90° 46.302'
- Tower Height and Type - 50 meter Met Tower

2. Instrument Information:

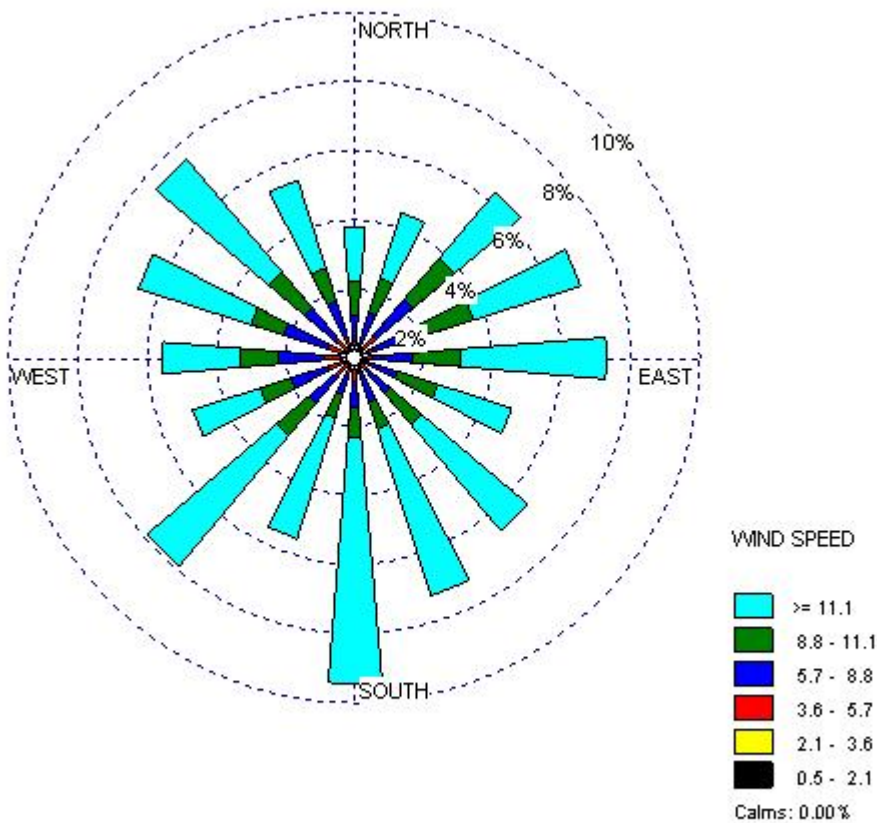
- Wind Speed: at 10m, 30m and 50m
- Wind Direction: at 10m and 50m
- Temperature: at 2m

3. Measurement

- Period: May 10, 2006 – July 23, 2007
- Measuring Interval: 10 minutes
- Total No. of Hours/Total No. of Hours Used: 6414 hr/5358 hr

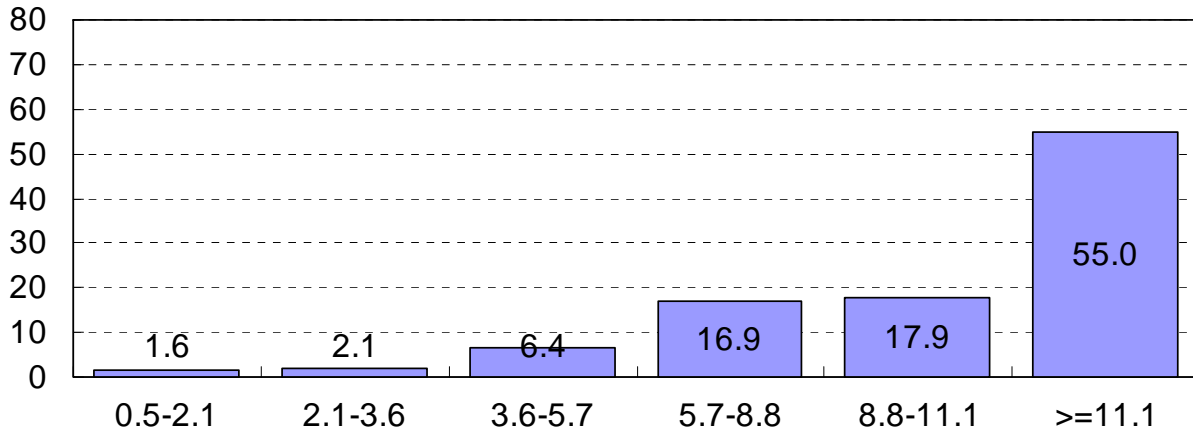
4. Results

- Wind Rose: Wind Speed at 50m (mph) and Wind Direction at 10m



- Average Wind Speed at 50m: 12.6 mph / 10.9 knots / 5.6 m/s

c. Wind Speed Distribution (mph) at 50m



d. Monthly Average Wind Speed (mph) at different measuring heights

| Month | 10m | | 30m | | 50m | |
|-----------------|---------|-------|---------|-------|---------|-------|
| | Average | STDEV | Average | STDEV | Average | STDEV |
| May, 2006 | 12.5 | 2.0 | 13.3 | 2.0 | 13.9 | 2.0 |
| June, 2006 | 9.9 | 1.7 | 10.6 | 1.7 | 11.1 | 1.7 |
| July, 2006 | 8.8 | 1.4 | 9.7 | 1.4 | 10.3 | 1.4 |
| August, 2006 | 8.7 | 1.5 | 9.5 | 1.5 | 10.4 | 1.5 |
| September, 2006 | 9.8 | 1.7 | 10.8 | 1.7 | 11.7 | 1.7 |
| October, 2006 | 12.7 | 1.9 | 13.5 | 1.9 | 14.9 | 1.9 |
| November, 2006 | 12.9 | 1.9 | 13.1 | 2.0 | 14.4 | 2.0 |
| December, 2006 | 18.5 | 2.6 | 18.8 | 2.8 | 20.1 | 2.6 |
| January, 2007 | 14.0 | 2.1 | 14.7 | 2.1 | 15.8 | 2.2 |
| February, 2007 | 13.0 | 1.7 | 13.6 | 1.6 | 14.9 | 1.6 |
| March, 2007 | 9.8 | 1.6 | 10.1 | 1.7 | 11.1 | 1.6 |
| April, 2007 | 9.2 | 1.5 | 9.7 | 1.5 | 10.9 | 1.5 |
| May, 2007 | 12.5 | 2.0 | 13.3 | 2.0 | 13.9 | 2.0 |
| June, 2007 | 9.9 | 1.7 | 10.6 | 1.7 | 11.1 | 1.7 |
| July, 2007 | 8.8 | 1.4 | 9.7 | 1.4 | 10.3 | 1.4 |

