

Pulaski County

1. Site Information:

- Ullin Junction
- Latitude - N 37° 16.676'
- Longitude - W 89° 11.545'
- Tower Height and Type – Communication Tower

2. Instrument Information:

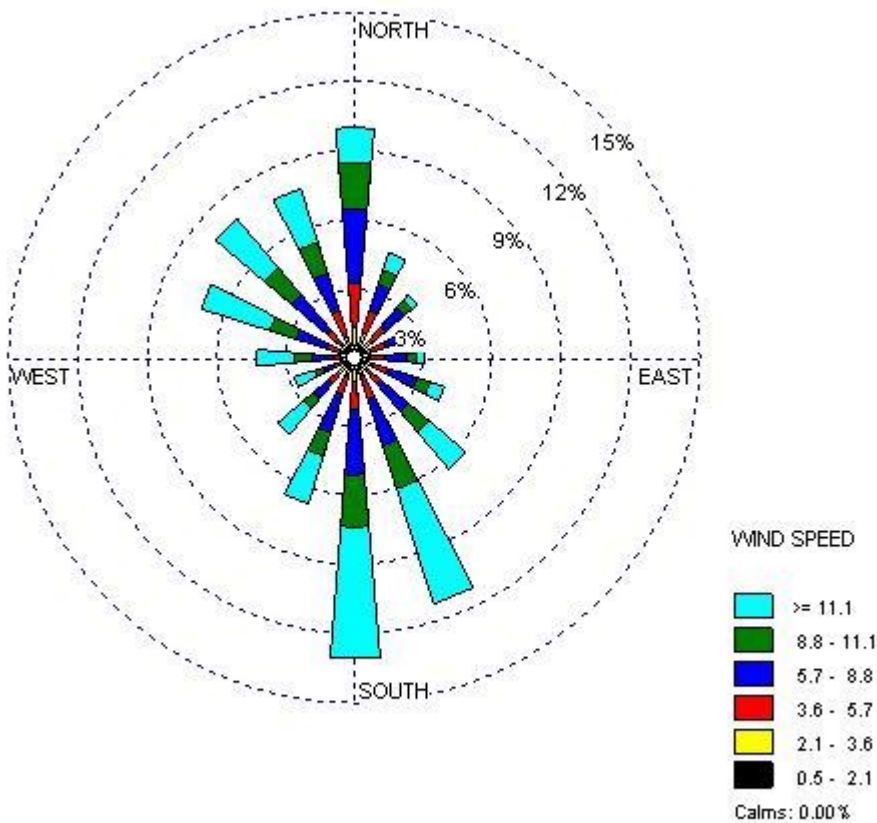
- Wind Speed: at 30m, 50m and 60m
- Wind Direction: at 30m and 60m
- Temperature: at 2m

3. Measurement

- Period: December 11, 2005 – September 10, 2006
- Measuring Interval: 10 minutes
- Total No. of Hours/Total No. of Hours Used: 6561 hr/6561 hr

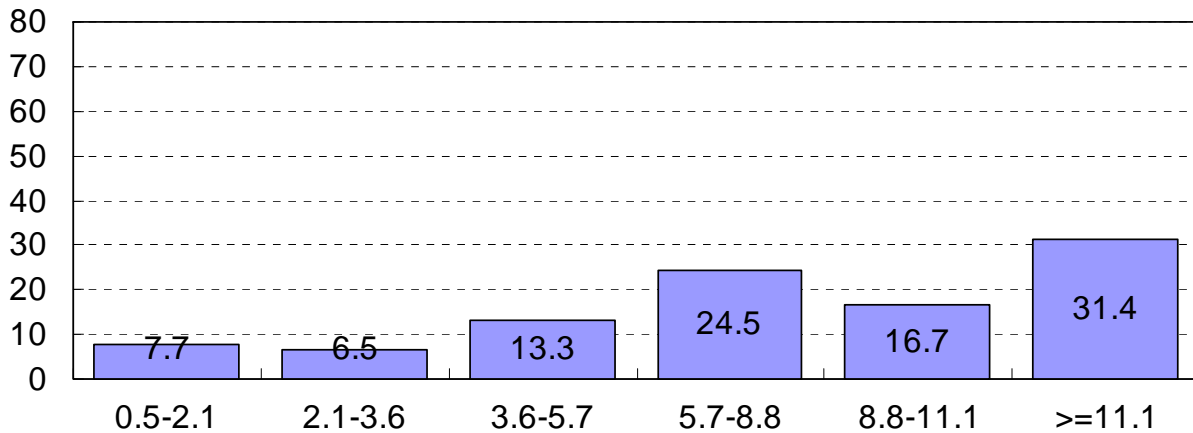
4. Results

- Wind Rose: Wind Speed at 60m (mph) and Wind Direction at 60m



- Average Wind Speed at 60m: 9.2 mph / 8.0 knots / 4.1 m/s

c. Wind Speed Distribution (mph) at 60m



d. Monthly Average Wind Speed (mph) at different measuring heights

Month	30m		50m		60m	
	Average	STDEV	Average	STDEV	Average	STDEV
December, 2005	8.2	1.5	9.3	1.5	9.8	1.5
January, 2006	10.2	2.0	11.6	2.0	12.3	2.0
February, 2006	8.5	1.6	9.6	1.6	10.2	1.6
March, 2006	9.5	2.0	10.8	1.9	11.6	1.9
April, 2006	8.5	2.0	9.8	1.9	10.7	1.9
May, 2006	6.7	1.6	7.8	1.5	8.4	1.5
June, 2006	5.5	1.4	6.7	1.4	7.2	1.3
July, 2006	5.3	1.3	6.5	1.3	7.0	1.3
August, 2006	4.4	1.1	5.4	1.1	6.0	1.1
September, 2006	4.6	1.2	5.3	1.1	5.7	1.0

